

Multisensory environments

BJLive!



We make your dreams
come true!



Why choose BJLive! for your multisensory project?

For **INNOVATION**. We created the SHX system, which is the next step in the concept of multisensory rooms. Innovation is also present in our new vibration elements, in lighting, in interactive systems and in the proposal for new technical materials... all this to offer you the best resources for your multisensory environment.

For **MANUFACTURING**. We manufacture the vast majority of the products in our catalogue locally and we always use trusted suppliers. This allows us to offer maximum guarantees and quality, flexibility in product customisation, reduction in delivery times and provide the best after-sales service on the market.

For **ADVICE**. Our team of therapists and technicians work by your side to ensure the project meets you and your users' needs. Whenever you wish, we can advise you on the selection of products, their distribution and installation and how to take full advantage of them.

Multisensory environments

page 4 Room types

page 19 Products
Catalogue

communication
learning leisure stimulation
well-being
interaction
exploration
perception

Essentials Room

This design includes the fundamental elements in a multisensory room to work with all the senses and create an incredible atmosphere.



Bubble tubes ①

Bubble tubes provide a strong visual stimulus, with their changing colours and the movement of the bubbles, which in turn also generate interesting auditory and vibratory stimuli.



Vibroacoustic water bed ⑤

Waterbeds allow you to explore your body in a pleasant way with the heated water mattress that moulds and adapts to your body. Thanks to the vibroacoustic system it is possible to have a sound and vibration experience throughout the body, to the rhythm of the music or your own voice.



Vestibular material ⑫

It provides pleasing sensations to develop balance and coordination, and encourages adequate sensory modulation. In this case, the Leaf Chair also provides support and the advantages of this primary position.



Aromatherapy ⑪

Enjoy the various fragrances that will take you to different sensory universes. It is a good tool to work on emotional regulation, reminiscences and to induce relaxation.



Fibre optics ②

Can you imagine being able to manipulate light? That's exactly what you can do with fibre optics, offering an attractive visual stimulus and an incredible tactile and proprioceptive experience, that you feel on your body.

LIST OF PRODUCTS

	UD.	PAGE
1. Interactive bubble tube BJ-ETBI	1	20
2. Fibre optics with lightsource 2m BJ-ETFFO2	1	22
3. Corner base bubble tube&fibre BJ-EMBETF	1	30
4. Wireless Remote for bubble tube or fibre optics. BJ-ETFMI	1	21
5. Water bed. BJ-EMCA	1	23
6. Vibroacoustic kit. BJ-EMVIB	1	25
7. Concave back panel. BJ-EMRV	2	31
8. Convex back panel. BJ-EMRX	1	31
9. Fun mirror 110 x 100 cm. BJ-EEGC	2	21
10. Ultrasonic aromatherapy. BJ-EDA	1	48
11. Aromatherapy kit. BJ-EKIA	1	48
12. Leaf Chair medium size. BJ-EVSBF	1	33

You can order this entire room with reference BJ-ES1 Room type 1: Essentials

perception

communication
aromas
interaction
colours
exploration
vibration
leisure
movement
well-being

Adventure Room

Multisensory rooms provide us with a safe and accessible environment that encourages exploration and discovery.



Lighted ball pool ⑦

Pool balls offer endless possibilities for play and the possibility of feeling the whole body thanks to their surround effect. The light option turns the body's movement or the voice into an amazing visual effect.

Psychomotricity material ④⑤⑥

Go up or down, climb, crawl, slide, swing ... With this material you can create safe environments that promote adequate psychomotor development: mobility, coordination and balance.

Mirrors ⑧

Mirrors, made to be totally safe, enhance mobility, recognition of the body schema, joint attention and many other activities, besides having a multiplier effect on any visual element.

Padding ④⑤⑥

Padding encourages safe exploration and allows you to move freely.

Interactive Panel ②

This resource offers us endless possibilities for interaction thanks to all the activities and games included. Interaction is possible by touch, voice or via the switches.

LIST OF PRODUCTS

	UD.	PAGE
1. Bubble tube island. BJ-ETIB	1	20
2. Interactive panel BJ-EP2	1	24
3. Padding for floor-mounted Panel. BJ-EBP	1	24
4. Set 16. BJ-EPS261	1	42
5. Curved padded bar. BJ-EPS030-B	2	45
6. Large step. BJ-EPS061-C	1	44
7. Lighted ball pool. BJ-EMPBL	1	23
8. Customised mirror. BJ-EEM	1	21

You can order this entire room with reference BJ-ES2 Room type 2: Adventure

exploration learning discovery colours interaction proprioception well-being fun

SHX. The technology that marks the difference

Sensory SHX is a new concept in multisensory rooms with endless possibilities for interaction that allow you to create environments and activities that you could only dream about before.

sound

Choose the combination of photographs, pictograms, videos, sounds, vibration, lighting and special effects to recreate scenes that reproduce any environment or activity you can imagine.

SHX rooms feature more than 150 different scenes grouped by collection (animals, colours, nature, seasons, sports, dances, places of the world, relaxing environments, underwater world, adventures, numbers...). You can also download any multimedia file and create your own scenes by simply adding lighting effects and other special effects.

effects

projection

lighting

fibre optics

bubble tube

control

tablet

buttons

die

Features control of all elements

Bubble tubes, fibre optics, projectors, lighting, sounds, vibration, special effects like stars, fans, soap bubbles...

One by one or all at once! To create a great orchestra for the senses.

Controls the elements in your room in every way imaginable

Pushbuttons, mats, tablets, giant touch screens, dice and access with buttons for cause-effect, scanning, random or step-by-step...

You can even access with eye-tracking devices and interact with your voice!

vibration

OUR EXPERTS INFORM YOU:

With Sensory SHX you can control the level of stimulation and choose sensory combinations by configuring the room for each user, perform impressive activities or experience sensory games and stories as if you were part of them!

Enrich your room with experiences and learning activities, customise them to suit each user's needs. Live the full story: feel, experience, understand the stimuli and connect them to a theme. Reinforce the contents you are working on, promoting communication, recognition, memory and control of the environment, multiplying the working options.



Univers Room

This room, based on SHX technology, offers endless options to ensure the users are the main actors and can find amazing activities to do.



SHX Tablet 16

With this tablet you can choose any SHX scene and select the collection of scenes that will be activated by the other controllers.



SHX Controller 14

This controller lets you easily choose between 6 different scenes. You can use it with pictograms and connecting external switches.



SHX Switch 17

The easiest way to trigger an action. They can be configured in cause-effect, random, scanning or sequential mode.



SHX Mat 15

Full interactivity of the SHX system right at your feet. Choose by stepping on any scene.



Lighting 11

Choose the colour you want for the room or make it change automatically based on the images projected, the sound or the voice.

Special Effects 18 19 20

In addition to the projection, sound, lighting and vibration you can activate effects such as bubbles, air, snow, projections and any others you can imagine.

LIST OF PRODUCTS

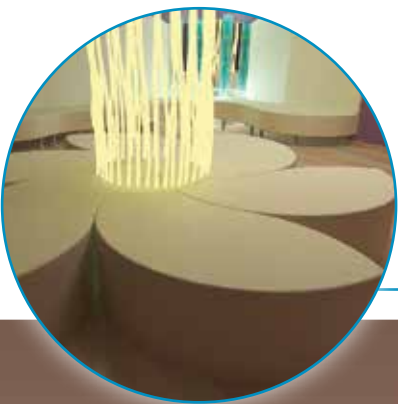
	UD.	PAGE		UD.	PAGE
1. SHX Bubble tube. BJ-ETBS	1	20	11. LED bar. BJ-EI02	3	25
2. SHX Fibre optics shower with lightsource. BJ-ETDFOX	1	22	12. Transformable pouf. BJ-EMPT	1	40
3. Corner base for bubble tube. BJ-EMBET	1	30	13. Vibroacoustic kit. BJ-EMVIB	1	25
4. Fun mirror 100 x 86 cm. BJ-EEPC	2	21	14. SHX Controller. BJ-EX21	1	27
5. Concave module with legs. BJ-EMAV-P	2	31	15. SHX mat. BJ-EX24	1	27
6. Concave back panel 70 cm. BJ-EMRV	2	31	16. SHX Tablet. BJ-EX23	1	27
7. Convex module with legs. BJ-EMAX-P	1	31	17. SHX Switch. BJ-EX22	1	27
8. Convex back panel 70 cm. BJ-EMRX	1	31	18. SHX Stars. BJ-EX43	1	26
9. High Yin module. BJ-EMYIN-A	2	30	19. SHX Fan. BJ-EX41	1	26
10. SHX Central rack. BJ-EX1	1	26	20. SHX Soap bubble machine. BJ-EX46	1	26

You can order this entire room with reference BJ-ES3 Room type 3: Univers

communication leisure autonomy customisation
interaction well-being exploration
imagination perception choice learning

Enjoy Room

Multisensory rooms are pleasant spaces that encourage a positive spirit and good predisposition to do any other activity. They are also a privileged space to enjoy any audiovisual resource immersively.



Vibration 11 12

It is a primary stimulus that has a great impact on those who experience it, offering vestibular, proprioceptive and tactile stimuli. The vibration is proportional to the sound of the music or video, allowing great immersion and a vibrating experience!

Furniture

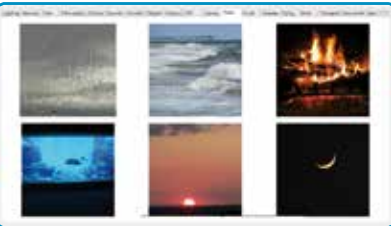
Besides a high level of comfort and aesthetic impact, its modular design offers the possibility to make changes in its distribution to perform all kinds of activities.

Experiences 1 2 5

With the SHX System the colour of bubble tubes and fibres can vary depending on the average colour of the images projected. Besides creating a moving visual effect, this resource allows you to “touch” the colours of images with the fibres.

Contents

In the SHX system you can use any audiovisual content and automatically enrich it with vibration, mood lighting and other effects.



LIST OF PRODUCTS

	UD.	PAGE		UD.	PAGE
1. SHX Central rack. BJ-EX1	1	26	11. Vibroacoustic kit. BJ-EMVIB	1	25
2. SHX Bubble tube. BJ-ETBS	1	20	12. Vibroacoustic kit for additional element. BJ-EMVIB2	1	25
3. Fun mirror 100 x 86 cm. BJ-EEPC	4	21	13. High Yin module. BJ-EMYIN-A	3	30
4. Corner base for bubble tube. BJ-EMBET	1	30	14. Concave module with legs. BJ-EMAV-P	4	31
5. SHX Fibre optics shower with Lightsource. BJ-ETFDFOX	1	22	15. Concave back panel 70 cm . BJ-EMRV	4	31
6. SHX Tablet. BJ-EX23	1	27	16. Convex module with legs. BJ-EMAX-P	2	31
7. SHX Switch. BJ-EX22	1	27	17. Convex back panel 70 cm . BJ-EMRX	2	31
8. SHX Controller. BJ-EX21	1	27	18. Corner module with legs. BJ-EMAR-P	1	31
9. LED Strip. BJ-EILL	4	25	19. Customised furniture. BJ-EMMM	2	31
10. Individual chair with arms. BJ-EMSSIB	2	41	20. Customised back panel. BJ-EMRM	2	31

You can order this entire room with reference BJ-ES4 Room type 4: Enjoy

All the multisensory resources can be enjoyed at home. A person's bedroom is a privileged space to enjoy. Customise it to suit you!



The SHX system can be installed on a home computer and the images can be projected with a mini-projector or any TV available. You just need a SHX Central Device.

This pouf can be perfectly adapted to each individual. It is suitable for those who have poor muscle tone and also for people with spasticity. Like all our furniture you can add vibration.

With a simple switch, adapted to each person's mobility, it is possible to start with cause-effect activities and also to access all content via a scanning system.

The Enabler Socket+ receiver allows you to connect any electrical appliance or adapted device and control when it is switched on and off in any SHX scene. Adapted toys, mirror balls, projectors, fans, heaters, soap bubbles... there are no limits!

For many people understanding when a TV works, knowing the channels, times... is too complicated. However, their family can adapt their favourite videos and make them accessible with simple icons and multiple access systems.

You can order this entire room with reference BJ-ES5 Room type 5: MyRoom

Multisensory rooms are an excellent tool for any learning: visual and auditory discrimination, learning colours, numbers, animals, seasons, music... your imagination sets the limits.



For a fun way to interact with sensory scenes you can use this die that works with any SHX collection and can be used with pictograms. Every time it is thrown, chance determines what will happen, encouraging play and participation.

You can turn voice into vibration, as well as into variations of images on the screens or changes in the overall lighting, depending on its intensity, providing interesting resources for speech therapy work.

This comfortable seat provides well-being and good predisposition to communicate and learn.

With ultraviolet light, only light-sensitive elements become relevant, allowing work with fabrics, marker pens, shapes, clothing and other items that will fully focus the user's attention.

We can turn any digital whiteboard into an interesting multi-sensory resource thanks to SHX System. In addition to its usual function thanks to, we add a new universe of possibilities and we can learn concepts such as colours, numbers, animals, fruits ... through multi-sensory immersion.

LIST OF PRODUCTS			UD.	PAGE		UD.	PÀG
1.	SHX Central device. BJ-EX3	1	26	8.	SHX Voice kit. BJ-EXKV	1	27
2.	High square module. BJ-EMAC	2	40	9.	LED UV Spotlight. BJ-EIFUVL	1	25
3.	Vibroacoustic kit. BJ-EMVIB	1	25	10.	Sensory Bag with UV elements. BJ-E34026	1	28
4.	Vibroacoustic kit for additional element. BJ-EMVIB2	1	25	11.	Customised padded back panel. BJ-EMRM	2	31
5.	SHX Die. BJ-EX28	1	27	12.	Customised Tatami. BJ-VMB	1	31
6.	SHX Tablet. BJ-EX23	1	27	13.	LED bar. BJ-EI02	3	25
7.	SHX Controller. BJ-EX21	1	27				

You can order this entire room with reference BJ-ES6 Room type 6: Bridges



A project tailor-made to suit you

We create a website for your room

Where you will find all the information related to your room, product sheets, quotes...

All you need to present your room to your team, or where necessary, to those responsible for financing it.

You decide who accesses the web!



We create a 3D plan of your project

Once we know the available space and we select the products that best suit your needs together, we will send you a **3D plan** with all the elements located in the room.

You will have a clear idea of what it will look like.



And we present it to you in video!

To see the result of the room we will make a video of it.
You will feel like you are inside it!

Shall we work together?

These tools are free and without obligation!
Comprehensive project: supply, installation, training...
What do you need?

Products catalogue

page 20 **Bubble tubes**
Accessories

page 21 **Controllers**

page 21 **Mirrors**

page 22 **Fibre optics**

page 23 **Water bed**

page 23 **Ball pool**
Classic
Lighted and interactive

page 24 **Interactive panels**
Other panels

page 24 **Ultraviolet**
Spotlights
Reflective elements
Caves

page 25 **Lighting**

page 25 **Vibration and Sound**

page 26 **SHX**
SHX Central Device
SHX Actuators
SHX Controllers

page 28 **Modular furniture**

page 30 **Sitting and positioning furniture**
Poufs
Children
Sofas

page 32 **Soft material**
Sets
Cylinders
Steps
Ramps
Other products
Fine motor skills

page 36 **Vestibular material**

Bubble tubes

WITH BUBBLE TUBES YOU CAN RECREATE ENVIRONMENTS WHERE COLOURS, VIBRATION, REFLECTIONS AND INTERACTIVITY OPENS UP ENDLESS POSSIBILITIES FOR VISUAL MONITORING, MOTOR SKILLS, CAUSE-EFFECT RELATIONSHIP, PLAYING WITH COLOURS...



Choose the reference depending on the mode of interaction:

Passive bubble tube

Provides gentle automatic colour changes.

BJ-ETB.

Interactive bubble tube

In addition to the automatic colour change, you can select the colour with controllers

BJ-ETBI

SHX bubble tube

This tube is suitable for rooms with SHX system, offering unlimited control options.

BJ-ETBS

THE PERFECT MEASUREMENTS
From our experience, we recommend 1.8-metre high and 20-cm wide tubes. This is the default size of our tubes and if you prefer, you can modify it.

ACCESSORIES

Ball kit for bubble tube

This kit consists of an inner tube in the tube through which the balls rise quickly and descend slowly on the outside. It is a fascinating effect that encourages visual tracking.

BJ-ETKB

12-piece set of coloured fish

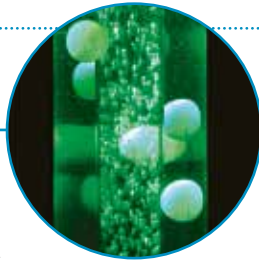
Set of 12 floating fish that will brighten up the bubble tube.

BJ-ES0908

Support for wall-fitting

Accessory that allows the bubble tube to be firmly fixed to the wall.

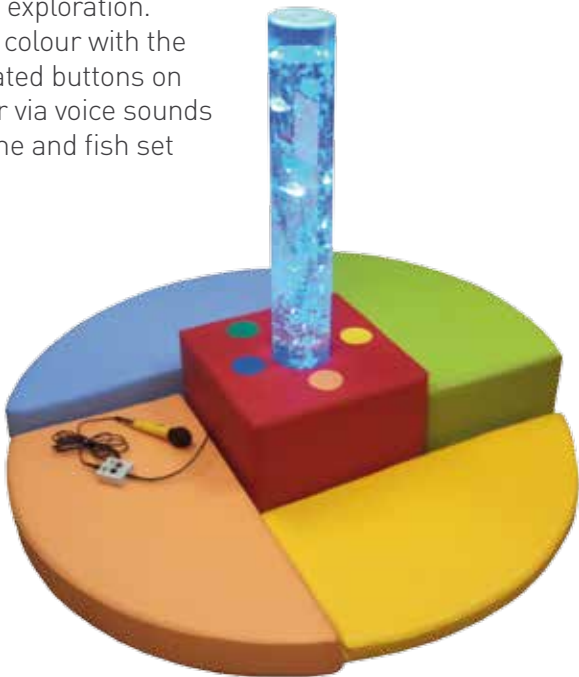
BJ-ETBA



Bubble island

This kit is ideal for pre-schools and nursery care, it includes a 1-metre bubble tube and a podium to encourage exploration. It changes colour with the five integrated buttons on the base or via voice sounds (microphone and fish set included).

BJ-ETIB



Controllers

Controller for tube or fibre

Controller with 6 backlit buttons to control the colours of the tube or fibre. It also has 6 inputs to add external switches.

BJ-ETFMCI: Wired remote for bubble tube or fibre optics

BJ-ETFMI: Wireless remote for bubble tube or fibre optics



Die for tube or fibre

Every time you roll the dice the tube or fibre changes colour depending on the result.

BJ-EDTF



With the die or wireless controller you can control several tubes or fibres at the same time or separately. Ask us for your preferences.

Mirrors

MIRRORS ENHANCE MOBILITY, RECOGNITION OF THE BODY SCHEMA AND JOINT ATTENTION, AND HAVE A MULTIPLIER EFFECT ON ANY VISUAL ELEMENT.

Fun mirror

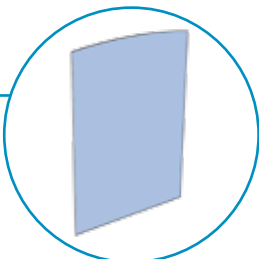
Use it with the corner bases for bubble tubes.

Measurements (height x width): 100 x 86 cm.

Small: **BJ-EEPC**

Use it with the square base for bubble tubes. Measurements (height x width): 100 x 110 cm.

Large: **BJ-EEGC**



Straight mirror

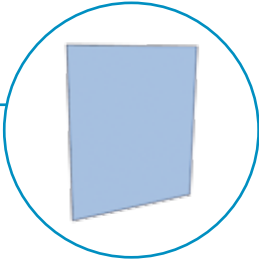
Use it with the corner bases for bubble tubes.

Measurements (height x width): 100 x 86 cm.

Small: **BJ-EEPR**

Use it with the square base for bubble tubes. Measurements (height x width): 100 x 110 cm.

Large: **BJ-EEGR**



Choose the size and shape you prefer and we will custom manufacture it to suit you. These are our standard sizes.

SAFETY FIRST

Our mirrors are made of acrylic material, reinforced with wood and have a protective surround to ensure maximum durability and safety.

Fibre optics

WITH FIBRE OPTICS YOU CAN OBSERVE, EXPLORE AND HANDLE THE FILAMENTS OF CHANGING COLOURS, ACCESSING A NEW WORLD OF ACTIVITIES AND SENSATIONS.



Fibre optics 2m

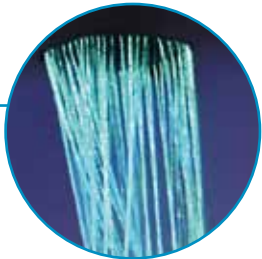
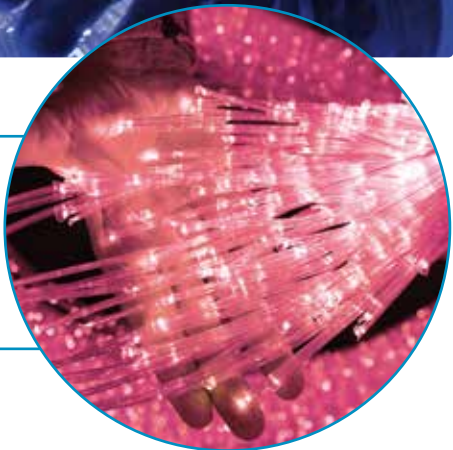
Fibre optics 150 2m beams of light with lightsource.
BJ-ETFF02

Fibre optics 3m

Fibre optics 150 3m beams of light with lightsource.
BJ-ETFF03

Fibre optics shower with lightsource

Using the fibre optics shower you can suspend fibres from the ceiling and configure them in a circle, curtain or beam.
BJ-ETFDFO



IS YOUR ROOM SHX?

If you add “-X” to the fibre optics references, they can be perfectly integrated into the SHX system offering unlimited control options.

Water bed

THE WATER BED ALLOWS YOU TO FEEL AND EXPLORE YOUR BODY, ENCOURAGING WELL-BEING.

Water bed

Always maintains a comfortable temperature thanks to the heater. Its design with legs makes it accessible for cranes. Measurements: 110 x 210 x 40 cm. **BJ-EMCA**

Vibroacoustic water bed

By adding the vibroacoustic Kit to the waterbed you can turn music or the voice into vibrations throughout the body, providing a unique experience that aids relaxation and proprioception. **BJ-EMCA+BJ-EMVIB**

COLOUR PALETTE / Leather-feel



BJ QUALITY

The vibration of the waterbeds we manufacture is based on 4D technology, providing a feeling as intense as you like.



Ball pools

BALL POOLS ARE A FUN ELEMENT THAT ENCOURAGES PLAY AND MOVEMENT. WITH THEIR SURROUND EFFECT THEY ALSO AID PROPRIOCEPTION.

CLASSIC

The ball pools are composed of a ground cover and four reinforced walls, forming a very solid and rigid assembly. They can be manufactured in various sizes.

Medium ball pool

Measurements: 145x145x45cm. 500 multicolour balls. **BJ-EMPB45**

High ball pool

Measurements: 145x145x70cm. 650 multicolour balls. **BJ-EMPB70**

LIGHTED AND INTERACTIVE

The lighted ball pools are composed of transparent balls that are lighted inside, causing an incredible light effect that encourages interaction. The pool colours change by moving the balls, with external controllers, by voice via a microphone or with external music.

Lighted ball pool

Measurements: 145x145x70cm. 650 transparent balls. Autonomous operation. **BJ-EMPBL**

SHX ball pool

Measurements: 145x145x70cm. 650 transparent balls. Integrated operation in the SHX System. **BJ-EMPBX**



Interactive panels

THE INTERACTIVE PANELS OFFER THE POSSIBILITY OF TURNING THE VOICE INTO COLOURS, CREATING MUSIC VIA TOUCH, ACTIVATING IMAGES BY PRESSING A BUTTON AND COMBINING DIFFERENT STIMULI WITH DIFFERENT ANSWERS. THEY ALLOW YOU TO DEVELOP CAUSE-EFFECT RELATIONSHIPS, COMMUNICATION, LEARN SHAPES, COLOURS, NUMBERS, AND MANY OTHER ASPECTS.

Interactive panel

This large format touch panel includes a specialised computer with an incredible sensory and interaction software package. The system provides applications to interact by voice with microphone included, external touchscreen or switches. Through the different activities you can work on the cause-effect relationship, vocalisation, mobility, playing, scanning, memory ... In addition to the activities pack included, you can integrate any application compatible with Windows. Padding system and wall-fixing system included. Measurements: 104 x 63 cm.

BJ-EP2

Padding for floor-mounted Interactive Panel

The Interactive Panel can be integrated to the floor using this base. **BJ-EBP**



Ultraviolet

UV LIGHT CAN HELP CREATE SPECIAL ENVIRONMENTS WHERE REFLECTIVE ELEMENTS ARE FULLY HIGHLIGHTED ENCOURAGING ATTENTION AND OPENING UP A NEW WORLD OF POSSIBILITIES.

SPOTLIGHTS

UV spotlight

Spotlight that includes 25W UV lamp focus, useful for creating small areas with ultraviolet light.

BJ-EIFUV



UV Fluorescent Tube

This 40W fluorescent tube includes support and everything required for its operation. Measurements: 125x14x6 cm.

BJ-EITFUV



LED UV spotlight

This DMX spotlight is composed of 55 high brightness long-life LEDs.

BJ-EIFUVL



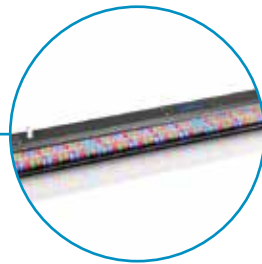
Lighting

WITH THE LIGHTING SYSTEMS YOU CAN CHANGE THE COLOUR OF THE ENTIRE ROOM OR A PARTICULAR AREA, CREATING TOTALLY DIFFERENT ENVIRONMENTS DEPENDING ON THE COLOUR CHOSEN.

LED bar

Creates a colour wash effect on the wall.

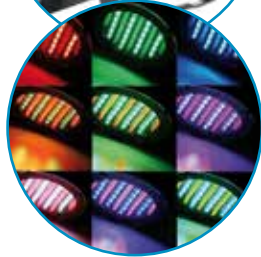
BJ-EI02



Spotlight

Creates an area of colour on the wall or floor where it is projected

BJ-EI03



Vibration and Sound

YOU CAN TURN AUDIO SIGNALS FROM A MICROPHONE OR A MUSIC PLAYER INTO VIBRATION IN ANY OF OUR PIECES OF FURNITURE. THE LEVEL OF VIBRATION IS ADJUSTABLE AND CAN BE VERY INTENSE IF REQUIRED.

Vibroacoustic Kit

This kit consists of a vibrating device that is installed at the factory, in any piece of our furniture. It also includes the vibration signal amplifier, to which you can connect any audio source such as an audio player, computer, etc.

BJ-EMVIB



Vibroacoustic Kit for additional element

This kit is similar to the above kit but does not include the amplifier, because various elements can be vibrated with just one amplifier.

BJ-EMVIB2



Sound system for vibroacoustic element

This professional sound system, an add-on to the vibroacoustic Kit, adds the ability to turn into high quality sound the signal that becomes vibration, as well as to directly connect a microphone to the system or a USB stick with audio files. The volume control for the vibration and the audio is completely independent.

BJ-EMM



SHX

THERE ARE THREE ELEMENTS THAT COMPRISE THE SHX SYSTEM: THE CENTRAL DEVICE THAT IS THE CORE, CONTROLLERS THAT GIVE THE ORDERS AND ACTUATORS THAT CREATE THE STIMULI.

SHX Controllers



SHX Central



SHX Actuators

SHX CENTRAL DEVICE

The SHX central device is the core of the SHX System, essential to access all its advantages. It includes:

- SHX server computer. Monitor, keyboard and mouse included.
- Software BJ Control SHX.
- SHX Central Device. Device that integrates the electronic control of the whole room.
- More than 150 scenes created and unlimited possibilities to create new custom scenes.
- Sound system and speakers.
- Short-range projector.
- Necessary cables.
- Rack with all connections to integrate all the elements.
- Cabinet to house the rack and all accessories.

BJ-EX1



SHX ACTUATORS

SHX actuators are the elements we can control at any SHX scene either individually or in a coordinated way.

SOUND AND IMAGE

The SHX Central Device incorporates the integrated projection and sound to see and hear the files you choose in each scene.

VIBRATION

You can add vibration to any piece of furniture in an integrated, using the Vibroacoustic Kit (see page 25).

SPECIAL EFFECTS

SHX Fan

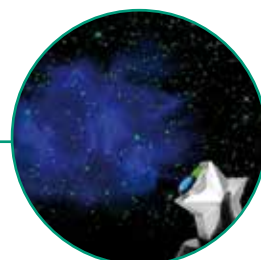
Activates the fan in SHX scenes when you want to recreate the wind, coolness and enjoy this feeling.

BJ-EX41



SHX Stars

Turn on this effect in any SHX scene and enjoy an attractive sky of moving stars. **BJ-EX43**



COLOURS (TUBE / FIBRE / SPOTLIGHTS / POOL)

In SHX in every scene you can choose any colour for visual elements such as the SHX bubble tube (see page 20) SHX Fibre Optics (see page 22), the Spotlights (see page 25) or the SHX Lighted Pool (see page 23). In addition to choosing a one-off colour, you can configure these elements in each scene to operate in automatic mode.

SHX Sun

Turn on this decorative sun when you are in any SHX scene.

BJ-EX45



SHX Soap bubble machine

Bubbles are an attractive element that can be activated at any time.

BJ-EX46

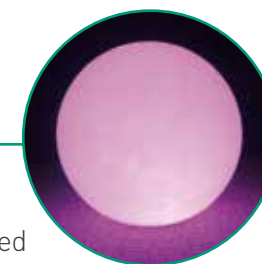


SPECIAL EFFECTS

SHX Planet

This large luminous sphere is a very attractive resource for hanging from the ceiling or placed on the floor.

BJ-EX42



Enabler Socket +

With this device you can control the activation of any element with a socket or device adapted for a switch.

BJ-234



SHX CONTROLLERS

SHX Controllers are the tool to launch SHX scenes and control the entire room. You can combine as many as you like.

SHX Tablet

It controls the BJ Control SHX software to activate any scene and choose the collection of scenes that will be activated by the other controllers. It includes a tablet, software, case and an Access Point to create a wireless network.

BJ-EX23



SHX Touch Panel

This large touch panel controls the BJ Control SHX software to select any scene and choose the collection of scenes that will be activated by other controllers. In addition, you can add any other Sensory Software and increase the possibilities. Measurements: 104 x 63 cm.

BJ-EX26



SHX Controller

Allows you to select 6 different scenes from the selected collection.

BJ-EX21



SHX Switch

Allows you to select any SHX scene. In addition, it can be configured to access in shuffle mode the scenes in a collection, as well as in sequential or scan mode.

BJ-EX22



SHX Mat

Allows you to select with your feet from 6 different scenes in the selected collection.

BJ-EX24



SHX Die

Every time you roll the die you choose between the scenes of the selected collection. Very useful for recognition activities and games with random content.

BJ-EX28



SHX Voice Kit

The SHX voice kit consists of two wireless microphones (one hand-held and one headset) that connect to the SHX Central Device allowing you to modify the room lighting or any element such as a tube, fibre or pool depending on the volume of the voice in four different modes: whites, colours, random and peaks.

In addition it includes two programs that convert the voice signal into light signals displayed on the image projected by the SHX Central Device. If there is any vibroacoustic element installed in the room, besides the lighting effects it is possible to convert the voice into vibration.

BJ-EXKV



Modular furniture

THIS MODULAR FURNITURE SYSTEM, CONSISTING OF 15 ELEMENTS, ALLOWS YOU TO COMBINE THEM TO SUIT YOUR NEEDS OR THE ACTIVITY YOU WANT TO PERFORM.

AVAILABLE MODULES

Yan Module

Available in three profiles.
Measurements: 140 cm x 80 cm.

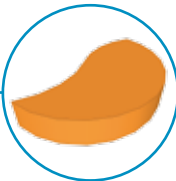
BJ-EMYAN



Yin Module

Available in three profiles.
Measurements: 140 cm x 80 cm.

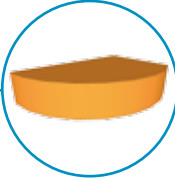
BJ-EMYIN



Left End Module

Available in three profiles.
Measurements: 105 cm x 70 cm.

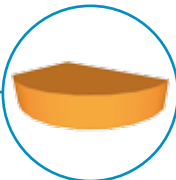
BJ-EMALI



Right End Module

Available in three profiles.
Measurements: 105 cm x 70 cm.

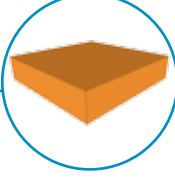
BJ-EMALD



Square Module

Available in three profiles.
Measurements: 110 cm x 110 cm.

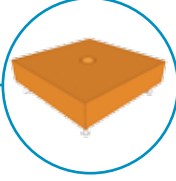
BJ-EMAC



Square base for bubble tube

Measurements: 110 cm x 110 cm.

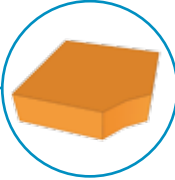
BJ-EMBCT



Corner Module

Available in three profiles.
Measurements: 86 cm x 86 cm.

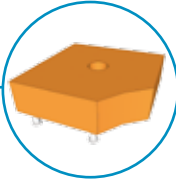
BJ-EMAR



Corner base for bubble tube

Measurements: 86 cm x 86 cm.

BJ-EMBET



AVAILABLE COLOURS

Leather-feel

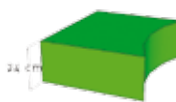


PROFILES

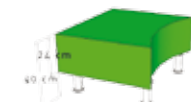
Choose one of these three profiles for each module.



HIGH MODULE
(REF+ A)



LOW MODULE
(REF+ B)

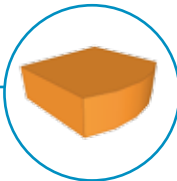


MODULE WITH LEGS
(REF+ P)

Convex Module

Available in three profiles.
Measurements: 70 cm x 60 cm.

BJ-EMAX

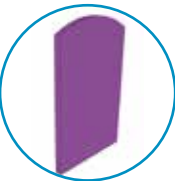


Convex foam back panel

Undulated backrests to create more flowing environments. Two heights available.

Measurements: 100/150 x 70 x 5 cm.

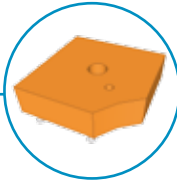
BJ-EMRX



Corner base for bubble tube and fibre optics

Measurements: 86 cm x 86 cm.

BJ-EMBETF



Concave foam back panel

Undulated backrests to create more flowing environments. Two heights available.

Measurements: 100/150 x 70 x 5 cm.

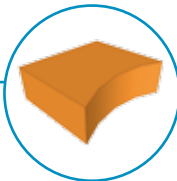
BJ-EMRV



Concave Module

Available in three profiles.
Measurements: 70 cm x 60 cm.

BJ-EMAV



End foam back panel

Undulated backrests to create more flowing environments. Two heights available.

Measurements: 100/150 x 105 x 5 cm.

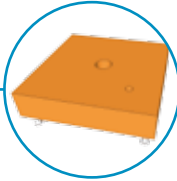
BJ-EMRL



Square base for bubble tube and fibre optics

Measurements: 110 cm x 110 cm.

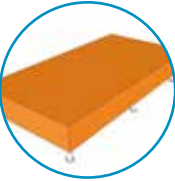
BJ-EMBCTF



Bed with legs

210x110x24 cm

BJ-EMC



A DYNAMIC ROOM!

Designed for lying down, sitting down, giving a massage, seeing, talking, feeling...

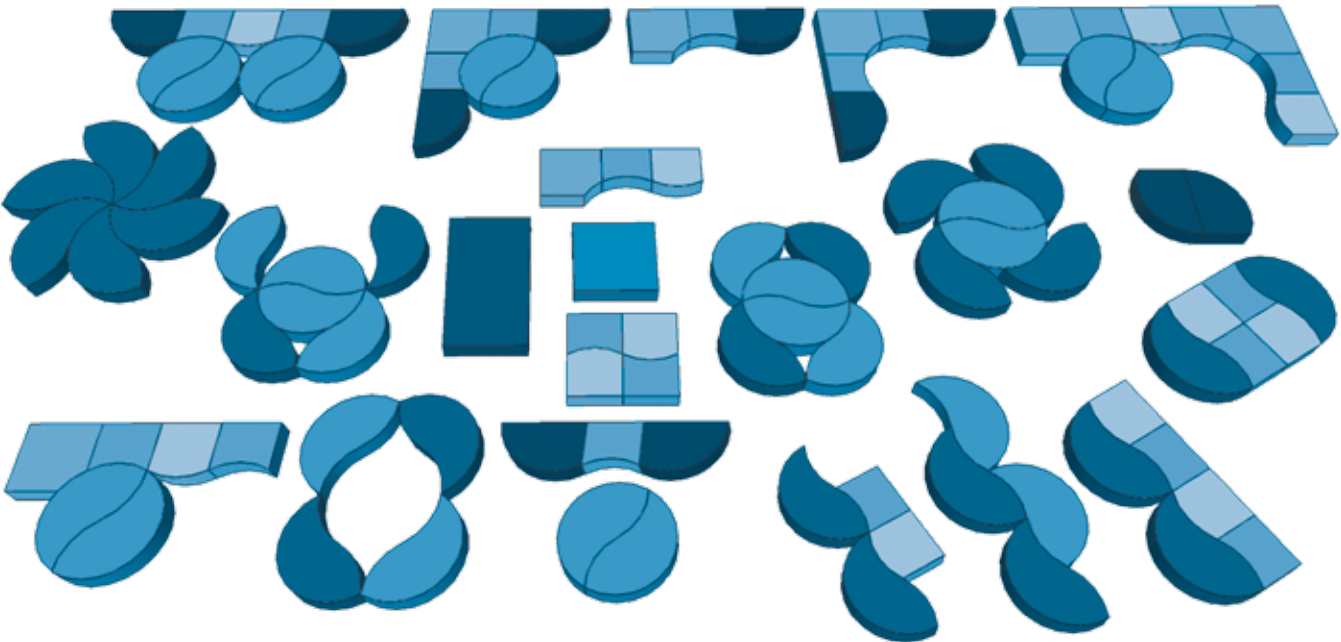
Easily expandable modular system

Modules designed in bright colours to create pleasing designs and combinations.

Designed to give users great comfort and total security for professionals.

Modules “with legs” are accessible to users who need to be transferred using floor-standing hoists.

**Choose the ideal configuration for each activity.
Ask us for advice. We will draw up a design for you.**



Sitting and positioning furniture

BEING COMFORTABLE IN THE PROPER POSITION AND WITH THE ACTIVATION LEVEL ADJUSTED ACCORDING TO THE ACTIVITY IS A KEY FACTOR FOR WELL-BEING AND FOR ANY EDUCATIONAL OR THERAPEUTIC INTERVENTION. IN ADDITION TO OUR MODULAR FURNITURE WE OFFER INTERESTING RESOURCES FOR CORRECT POSITIONING.

Comfort seat

The comfort seat has the perfect combination of foam and ball stuffing to allow you to sit on a stable base and feel enveloped by its comfortable backrest. Measurements: 80 x 80 x 87 cm.

BJ-EMAC

Transformable Pouf

This magical element can be adapted to each person's needs at each time. It is highly suitable for a wide range of users especially those with low muscle tone or spasms. Use it in different positions. Measurements: 140 x 180 cm.

BJ-EMPT

POUFS

Our poufs are made in a very resistant and pleasant material, they are filled with small balls to adapt to the body shape.

Round island Pouf

Measurements: 1.8m diameter x 0.5m.

BJ-EMPI

Pouf bed

Measurements: 1.5 x 1 x 0.5m.

BJ-EMPQ

Medium round Pouf

Measurements: 0.75 x 0.4m.

BJ-EMPRM

Large round Pouf

Measurements: 1 x 0.4m.

BJ-EMPRL

Giant round Pouf

Measurements: 1.2 x 0.4m.

BJ-EMPRXL



CHILDREN

Solutions for correct positioning of children.

Mouldable mat

Measurements: 135 x 135 x 10 cm.

BJ-EMS443

Baby bed

Padded bottom.

Measurements: 140 x 140 x 15 cm.

BJ-EMS444



SOFAS

Sofas provide a good opportunity to sit back, relax and enjoy.

Individual Chair

Measurements: 55 x 65 x 70 cm. **BJ-EMS361**

Option with arms: **BJ-EMSSIB**

Double Chair

Measurements: 110 x 65 x 70 cm. **BJ-EMS362**

Option with arms: **BJ-EMSSDB**

Triple Chair

Measurements: 140 x 65 x 70 cm. **BJ-EMS364.**

Option with arms: **BJ-EMSSTB**



QUALITY FURNITURE

All our material is created using antiallergic, antibacterial and easily washable materials. They are pleasant materials that are soft to the touch, and high quality for intensive use.

Soft material

PADDING THE FLOOR OR WALLS IS A GREAT IDEA TO ENCOURAGE SAFE EXPLORATION. ALL THE MATERIAL IN THIS CATALOGUE IS DESIGNED TO PROMOTE PSYCHOMOTOR DEVELOPMENT, STIMULATING MOVEMENT AND PLAY.

Small tatami

Measurements: 2 x 1 m.

BJ-EM095G

Large tatami

Measurements: 2 x 1.5 m.

BJ-EMT095C

Folding mat

BJ-ESFP



SETS

Set 5

4 pieces.
Measurements:
255x60x30cm.

BJ-EPS240



Set 10

5 pieces.
Measurements: 190x190x30cm.

BJ-EPS250



Set 16

4 pieces.
Measurements: 220x50x55cm.

BJ-EPS261



Set 45

5 pieces.
Measurements: 245x60x45 cm

BJ-EPS291



Set 46

Easy to pack and transport.
Measurements: 135x128x15cm.

BJ-EPS292



Set 47

6 pieces.
Measurements:
380x60x37 cm.

BJ-EPS293



Set 39

11 pieces.
Measurements: 355x205x5 cm.

BJ-EPS285



Tier set

4 pieces.
Measurements: 180x100x50 cm.

BJ-EPS450-A



CYLINDERS

Measurements:
20 x 60cm. **BJ-EPS031-A**
35 x 55 cm. **BJ-EPS031-B**
25 x 100 cm. **BJ-EPS031-C**
30 x 120 cm. **BJ-EPS031-D**
50 x 60 cm. **BJ-EPS031-E**
50 x 100 cm. **BJ-EPS031-F**
15 x 60 cm. **BJ-EPS031-G**
30 x 60 cm. **BJ-EPS031-H**
35 x 110 cm. **BJ-EPS031-J**

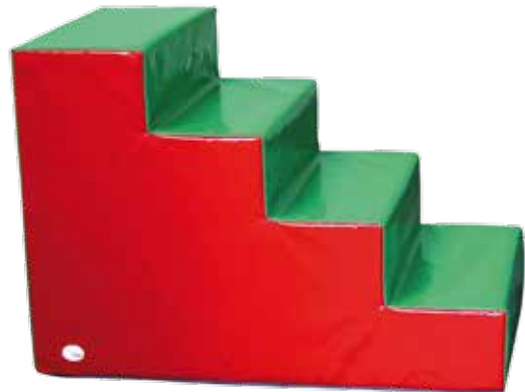


STEPS

Measurements:
65 x 60 x 30 cm.
BJ-EPS061-A



Measurements:
100 x 60 x 68 cm.
BJ-EPS061-C



Measurements:
75 x 60 x 50 cm.
BJ-EPS061-B



RAMPS

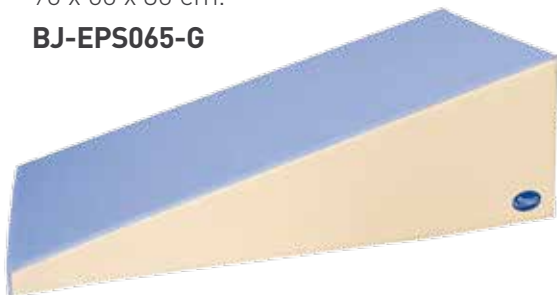
Measurements:
60 x 60 x 30 cm.
BJ-EPS065-A



Measurements:
70 x 50 x 50 cm.
BJ-EPS380



Measurements:
90 x 60 x 30 cm.
BJ-EPS065-G



OTHER PRODUCTS

Curved padded bar

Measurements 200x25x25 cm.
BJ-EPS030-B



Rock climbing shape - Pack 3 units

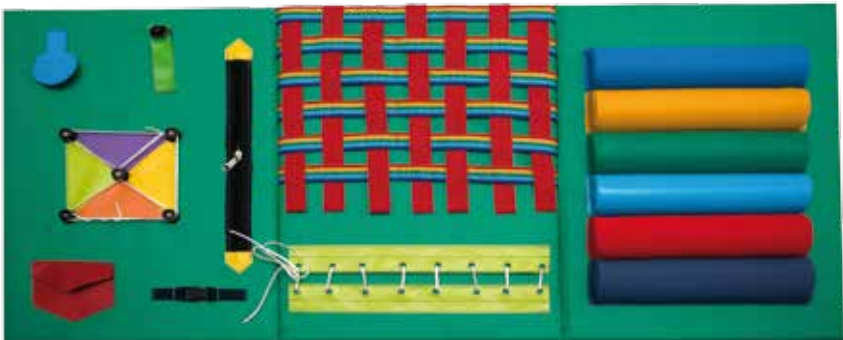
Measurements: 60x55x40 cm.
BJ-EPS409



FINE MOTOR SKILLS

Touch-touch panel

This fine motor skills panel consists of buttons, zips, fastenings, rings, buttonholes, magnet clasp, textures, zip, Velcro, loom.
BJ-EMS600



Vestibular material

THE VESTIBULAR SYSTEM INFORMS US OF OUR BODY'S MOVEMENT IN SPACE, AN ESSENTIAL COMPONENT FOR BALANCE. ITS STIMULATION PROMOTES THE DEVELOPMENT OF PSYCHOMOTOR SKILLS (COORDINATION, BALANCE, BASIC MOTOR BEHAVIOUR...), AND IS A POWERFUL TOOL TO MODIFY MUSCLE TONE, REGULATE LEVELS OF ALERTNESS, MOOD AND CONNECT WITH OUR EMOTIONS.

Leaf Chair

Designed for use both at home and in hospitals, nurseries, schools and multisensory rooms, the leaf chair provides multiple benefits in vestibular and proprioception areas. It also helps to regulate emotions, providing a great sense of security and calm.

Large **BJ-EVBG**
Medium **BJ-EVBM**
Small **BJ-EVBP**



...and this is just the beginning

Let us know your needs and interests and we will offer the best solutions for your project



You can find videos of our products in the "Multisensory Products Catalogue" playlist on our YouTube channel





LET YOUR
IMAGINATION
FLY 

We're by your side

Contact our specialised team
of advisers and technicians.

t: +34 932 850 437 | info@bjliveat.com

www.bjliveat.com

Technology is always evolving!

Check out the latest version
of this catalogue at:

www.bjliveat.com