

# Controlling an SHX Room from an external program

Using SHXRemote, you can launch contents from Grid3. This process is similar to other programs.

Compatible with SHX Server 1.6 or superior.

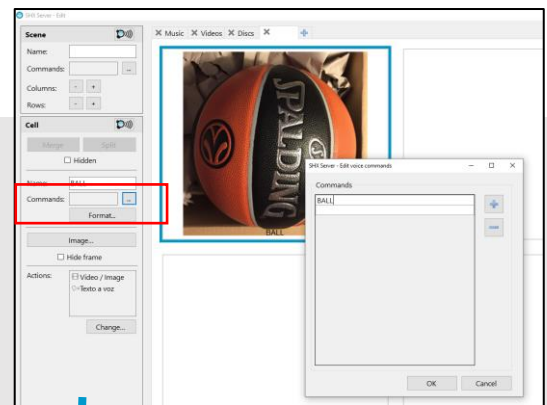
## 1. Install SHXRemote in the computer where Grid3 is installed.

Download it from: <http://update.bjliveat.com/SHX/SHXRemoteSetup.exe>

## 2. The computer where Grid3 is installed must be on the same network as the SHX Server.

## 3. On the SHX server, go to edit mode and add a voice command to the cells you want to control

See more info in the sheet [Voice control...](#)



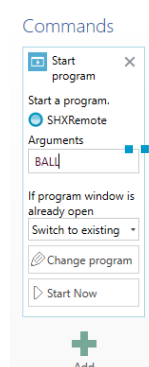
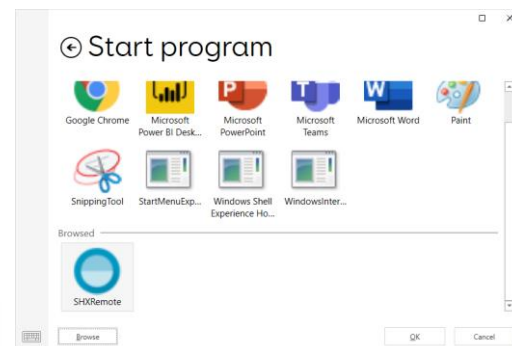
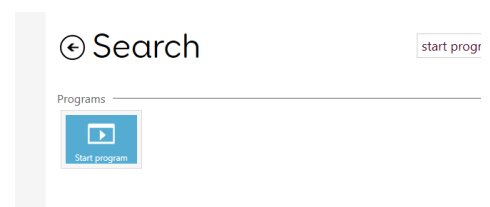
In this example we've added "BALL"

## 4. Edit Grid 3

a) Create a new cell and add a "Start Program" command

b) Browse in  
C:\Program Files (x86)\BJLive!\SHXRemote  
and select **SHXRemote.exe**

c) In the field "Arguments" of the Start Program command in Grid 3, add the name of the voice command of the selected cell in SHX.



BALL for this example

## 5. Use it!

Every time you press the cell the SHX content will be launched