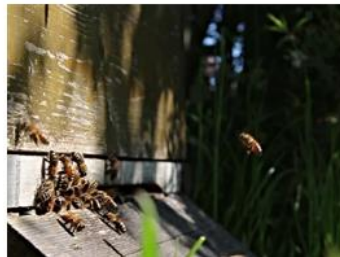


# SHX Topics for the Elderly

Do you have an SHX Sensory Room? Download now these new contents for your working sessions with the elderly within the SHX Multisensory rooms.



Our marketing and innovation department has developed **new contents designed for working with the elderly**, in order to fight the progressive deterioration of the cognitive, sensorial, motor and social areas. Our objective is to help them achieve emotional well-being through the right stimuli.

[Read more about these contents](#)

## How to download the contents

1. **Click on the download button** of the selected collection and the download will start automatically.
2. **Open the file and click on 'Execute'** and accept the installation. The folders will be automatically pasted within your computer (within the location C:BJCSHX).
3. **Open your SHX Software**
4. **Go to File > Import** (inside the SHX Software), and go to the location of your computer 'C:BJCSHX'. Choose the .bjx file of the desired collection and import the whole collection or choose only some scenes. It is important that you select the 'Add scenes to current settings' button so that you don't lose your previous scenes and configurations. Click OK.

**Find more information** about import/export functionality in the [SHX Room User Guide](#) on page 16.

Download the contents for Elderly now: [Download now](#)

Go to the full contents library to see all the contents available: [Go to SHX library](#)